

CHRIS

GENE THORNE

STRAIGHT EIGHTH FEEL ♩=88

9

18

27

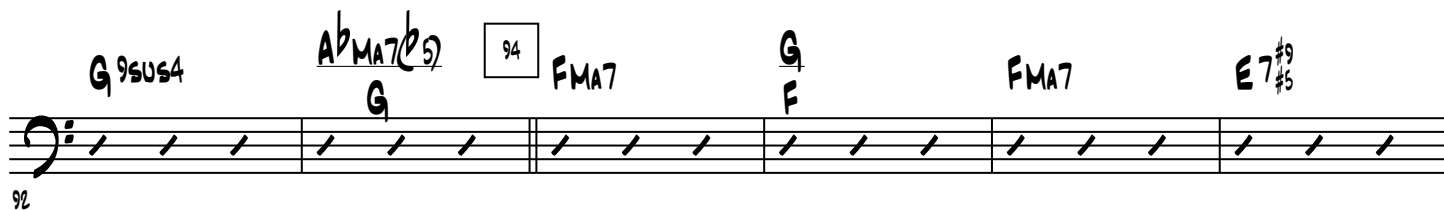
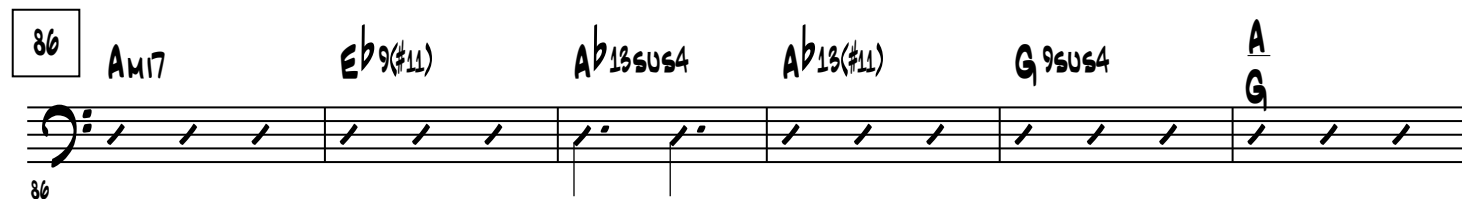
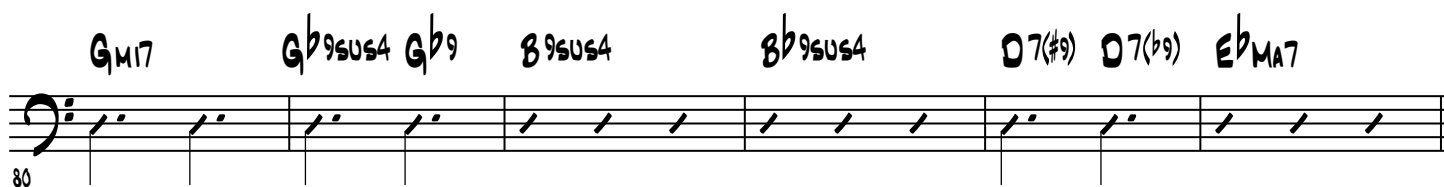
33

39

43

45

Chords: FMA7, G, F, Dm11, FMA9, G9sus4, G9, C, Bb13sus4, Bb13, Eb9, AbMA7, Am17, D9, Dm11, AbMA7(b9), Am17, D13(#11), Gm17, Gb9sus4, Gb9, B13sus4, Bb13sus4, D7(#9), D7(b9), AbMA7(#9), G.



Am17 Eb9(#11) D13(#11) Dm17 G13sus4 G13(b9) CMA9

104

110

118

Dm11 AbMA7(b9) Am17 D13(#11)

116

FMA9

122

The musical score for acoustic bass, titled "CHRIS", spans measures 104 to 122. The notation is in bass clef with a key signature of one flat. The score includes various chords and melodic lines with dynamics like *ff* and *mf*. The chords are: Am17, Eb9(#11), D13(#11), Dm17, G13sus4, G13(b9), CMA9, Dm11, AbMA7(b9), Am17, D13(#11), and FMA9. The notation includes slurs, ties, and a repeat sign at the end.