

TENOR 2

PEA SHOOTER



ArmyFieldBand.com/perspectives

SWING

♩=232

THE U.S. ARMY FIELD BAND JAZZ AMBASSADORS

MUSIC BY JEFF LOPEZ

(5)

2-3 *mf*

10 12-15

19

23 24-27

(29) *fp*

29 *fp*

37 *fp*

42 45-47

(49) *mp*

49

© 2011 by Jeff Lopez

This Arrangement © 2011 by Jeff Lopez

Reproduction and Public performance limited to Educational and Military Ensembles

All Other Rights Reserved. Used By Permission



PEA SHOOTER

53 *mp* **(57)** *f* **(65)**

57 *fp* *f* 7 16 *mf* **(85)**

82 *f* **(89)**

OPEN DRUM AND SAX DUET
OPEN 2 4 *mf* 87-88 92-95

(97) 5 97 99-103

(105) 4 105 108-111

(113) 4 113 116-119

(121) 4 121 124-127

(129) 4 129 132-135

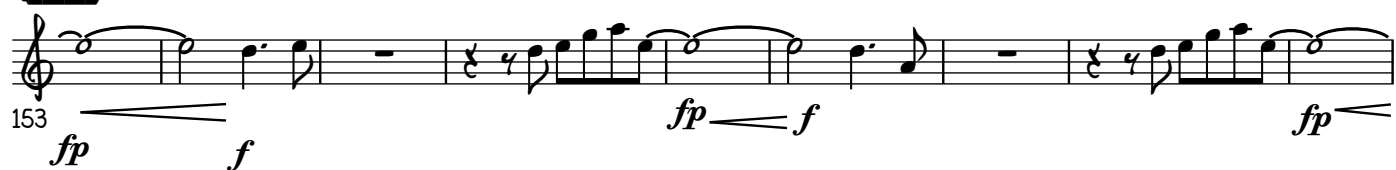
(137)



(145)



(153)



(171)



(179)



[illegible]

184

187

187

The first staff of music is in treble clef with a key signature of one sharp (F#). It begins with a common time signature 'C'. The melody consists of the following notes: G4 (quarter), A4 (quarter), B4 (quarter), C5 (quarter), B4 (quarter), A4 (quarter), G4 (quarter), F#4 (quarter), E4 (half). This is followed by a whole rest. The staff then continues with a 4/4 time signature, followed by the notes: D4 (half), C4 (half), B3 (quarter), A3 (quarter), G3 (quarter), F#3 (quarter), E3 (half), and D3 (half). The staff ends with a whole rest.

195

The first staff of music is in treble clef with a key signature of one flat (B-flat). It contains six measures of music. The first measure has a quarter rest, followed by eighth notes G4, A4, B-flat4, and A4. The second measure has a quarter rest, followed by eighth notes G4, F4, E4, and D4. The third measure has a quarter rest, followed by eighth notes D4, C4, B-flat4, and A4. The fourth measure has a quarter rest, followed by eighth notes G4, F4, E4, and D4. The fifth measure has a quarter rest, followed by eighth notes D4, C4, B-flat4, and A4. The sixth measure has a quarter rest, followed by eighth notes G4, F4, E4, and D4.

199

203

A musical staff in treble clef with a key signature of one sharp (F#). The melody consists of eighth and quarter notes, some beamed together, and rests. There are two accents (^) above the notes at measures 3 and 6. The piece ends with a double bar line.

203